



## **PARKS & RECREATION COMMISSION MEETING**

**Council Chambers  
200 H Street  
Antioch, CA 94509**

**Thursday  
October 15, 2015  
7:00 p.m.**

### **AGENDA**

**I. CALL TO ORDER**

**II. PLEDGE OF ALLEGIANCE**

**III. ROLL CALL**

**IV. PUBLIC COMMENTS**

Residents are given the opportunity to address the Commission on Park and Recreation issues not on the regular agenda.

**V. APPROVAL OF MINUTES**

Recommended Action:

- 1) Motion to approve annotated agenda minutes of the Parks and Recreation Commission meeting of August 20, 2015.

**VI. BUSINESS**

- 1) Review of Updated Prewett Community Park Project Conceptual Plans and Cost Estimates for the Accessible Spray Park and Playground.
- 2) Update on Contra Loma Estates Neighborhood Park Project Including Playground Replacement.

**VII. COMMUNICATIONS (Announcements and Correspondence)**

1. Staff
2. Commission Communication

**VIII. ADJOURNMENT**

*The meetings are accessible to those with disabilities. Auxiliary aides will be made available for persons with hearing or vision disabilities upon request in advance at (925) 779-7078 or TDD (925) 779-7081. Agenda and related writings provided to Commission members are available for viewing by the public during normal office hours at the Antioch Community Center, located at 4703 Lone Tree Way, Antioch, CA 94531, as well as at the Committee meeting. Individuals may view the agenda and related writings on the City of Antioch website: [www.ci.antioch.ca.us](http://www.ci.antioch.ca.us)*



## **PARKS & RECREATION COMMISSION MEETING**

**Council Chambers  
200 H Street  
Antioch, CA 94509**

**Thursday  
August 20, 2015  
7:00 p.m.**

### **ANNOTATED AGENDA**

#### **I. CALL TO ORDER**

*Call to Order by Chair Immekus at 7:00 pm*

#### **II. PLEDGE OF ALLEGIANCE**

*Chair Immekus led the Pledge of Allegiance*

#### **III. ROLL CALL**

*Commissioners Present: Cook, J. Farr, K. Farr, Knight, McClelland, Immekus  
Commissioner Soliz arrived at 7:06pm after the Approval of Minutes  
Staff Present: Mike Bechtholdt, Public Works Operations  
Nancy Kaiser, Parks and Recreation Director*

#### **IV. PUBLIC COMMENTS**

Residents are given the opportunity to address the Commission on Park and Recreation issues not on the regular agenda.

*There were no public comments*

#### **V. APPROVAL OF MINUTES**

Recommended Action:

- 1) Motion to approve annotated agenda minutes of the Parks and Recreation Commission meeting of July 16, 2015.

*Motion to Approve Minutes for Meeting of August 20, 2015  
5 Yes / 1Abstain / 1 Absent*

#### **VI. BUSINESS**

- 1) Presentation: Lynne Filson, Assistant City Engineer, will provide a review of the purpose and role for the Bicycle and Pedestrian Advisory Committee (BPAC), a function of the Parks and Recreation Commission approved by City Council.

*The meetings are accessible to those with disabilities. Auxiliary aides will be made available for persons with hearing or vision disabilities upon request in advance at (925) 779-7078 or TDD (925) 779-7081. Agenda and related writings provided to Commission members are available for viewing by the public during normal office hours at the Antioch Community Center, located at 4703 Lone Tree Way, Antioch, CA 94531, as well as at the Committee meeting. Individuals may view the agenda and related writings on the City of Antioch website: [www.ci.antioch.ca.us](http://www.ci.antioch.ca.us)*





*Assistant City Engineer Lynne Filson summarized the Bicycle and Pedestrian Advisory Committee function. Cities with population over 100,000 are required to have a separate committee to review projects, provide a platform for community input, and recommend and approve projects for consideration. Example of current projects includes ramps along Blue Rock and W. Tregallas. In 2016 the Commission may lead a discussion on trail planning for the City and staff may recommend that the Municipal Code be updated to reflect the change in duties for the Commission.*

- 2) Review and Recommendation of Disc Golf Opportunities: Final report and recommendation from the committee exploring the feasibility of including Disc Golf opportunities in Antioch park facilities.

*Motion to Approve recommendation requesting staff to review the community proposal and research the feasibility for disc golf at Prewett Community Park, and report back to the Commission in 90 days.*

*6 Yes / 1 Abstain*

*Public Comments addressed funding sources, viability of Prewett Community Park, and commended the work of the community in support of this recreational activity.*

## **VII. COMMUNICATIONS (Announcements and Correspondence)**

### **1. Staff**

*Public Works staff provided an additional update on Chi Chi Bu Park; the turf replacement would be complete by September 1<sup>st</sup> and the Park could re-open by October 1<sup>st</sup>. There were six main water breaks in parks recently; the system is old, it is a rare situation and staff is addressing the challenges. The irrigation controllers are being replaced with more efficient systems to improve water management. For example the controllers can adjust to rain from an automatic sensor.*

*Recreation staff announced that the Fall Activity Guide was available and registration was open. The 2008 WW Park Bond Report for Antioch was distributed to Commissioners, and staff provided a summary of the June 18<sup>th</sup> Water Park incident.*

*The Jr. Giants hosted the end of season family party with 600 in attendance at the Water Park. The summer dance recital had 200 parents enjoy numerous presentations.*

### **2. Commission Communication**

*Chair Immekus announced that he was appointed to the Contra Costa Children's Council, Board of Directors. Several Commissioners noted that the parks looked good at the height of the summer.*

## **VIII. ADJOURNMENT**

*The meeting adjourned at 8:10 pm. The next regular meeting is scheduled for October 15, 2015 following a recess in September.*

*The meetings are accessible to those with disabilities. Auxiliary aides will be made available for persons with hearing or vision disabilities upon request in advance at (925) 779-7078 or TDD (925) 779-7081. Agenda and related writings provided to Commission members are available for viewing by the public during normal office hours at the Antioch Community Center, located at 4703 Lone Tree Way, Antioch, CA 94531, as well as at the Committee meeting. Individuals may view the agenda and related writings on the City of Antioch website: [www.ci.antioch.ca.us](http://www.ci.antioch.ca.us)*



## STAFF REPORT TO THE PARKS AND RECREATION COMMISSION

**DATE:** Regular Meeting of October 15, 2015

**TO:** Parks and Recreation Commission

**SUBMITTED BY:** Nancy Kaiser – Director of Parks and Recreation *Nancy Kaiser*

**SUBJECT:** Review of Updated Prewett Community Park Project Conceptual Plans and Cost Estimates for the Accessible Spray Park and Playground

---

At the June 9, 2015 City Council meeting, Council approved conceptual plans and project cost estimates for the Prewett Community Park Final Phase Development Project and authorized the development of plans and specifications for public bidding in the fall of 2015. The conceptual plans provided visualization and development ideas for the all-abilities accessible spray park (Spray park) and all-abilities accessible playground (Playground).

City Council also directed staff to continue to develop the cost estimates and specific designs for the Spray Park and Playground. The Parks and Recreation Commission provided a recommendation towards the early design concepts based on the initial project costs:

- Accessible Spray Park Option B: estimated cost of \$850,000 (Attachment A)
- Accessible Playground Option A: estimated cost of \$550,000 (Attachment B)

Following the June 9<sup>th</sup> meeting, staff and design consultants (RHAA and ADG) proceeded with the next steps of collecting more accurate costs and detailing the design of these two features. The original concept plans could not be constructed within the budget, and staff took the opportunity to do some value engineering to investigate ways of reducing costs while maintaining or enhancing the desired high quality and unique all-abilities features in Prewett Community Park.

To review, the total amount of funding available for the project is \$2,038,000. The original allocation was as follows:

1. Design, Project Management, Staff Time	\$ 450,000
2. Security Cameras (completed)	\$ 128,000
3. Spray Park/Splash Pad	\$ 850,000
4. All access playground	\$ 550,000



5. Construction Contingency	\$ 110,000
<b>Projected Total Project Cost</b>	<b>\$2,088,000</b>
Estimated Shortfall	<\$50,000>

#### Spray Park

As the team continued to work on the spray park portion of the project, it became apparent that a significant amount of money was being spent on one single feature (the large Tree Hover pad/slide), square footage of the concrete spray pad, as well as the perimeter area landscaping. During project review, it was also determined that the Tree Hover pad/slide did not meet accessibility goals. This feature is only accessible by climbing stairs, which prohibits children with physical disabilities from enjoying this water feature. The adjacent landscaping was deemed extensive (for example, the conceptual design included concrete benches and a high number of trees).

The additional design work and detailed review of project goals has resulted in a new plan that maximizes the number of spray features, meets the desired Delta theme, allows the project to remain within a realistic budget, and provides accessibility for children of all ages and abilities at all spray features.

The updated cost estimate is \$980,000.

#### Playground

During the review of the accessible playground, the project team determined that excavating the hillside for an accessible path and slides was a significant cost without a true benefit to the user. The excavation required removal of existing, mature trees and the addition of infrastructure to support the retaining wall and utilities. Several design options were reviewed and the updated plan meets the primary goals of maximizing accessibility and offering a wide variety and number of toys/features.

The updated playground design improves the utilization of the project funds (by removing the hillside as a design feature), maintains the existing mature trees, maintains the picnic element with shade, and increases the number of features in the playground.

The updated cost estimate is \$440,000

#### Updated Project Budget

The total amount of funding available for the project remains at \$2,038,000. The updated project allocation is as follows:

1. Design, project management, staff time:	\$ 450,000
2. Security Cameras (completed):	\$ 128,000
3. Spray Park/Splash Pad-Pool	\$ 980,000
4. Accessible Playground	\$ 440,000
5. Construction contingency:	\$ 100,000

**Projected Total Project Cost:**

**\$2,098,000**

Estimated Shortfall:

<60,000>

Staff believes the updated concepts provided are excellent alternatives to the design concepts presented on June 9<sup>th</sup> and can be constructed within the available project funding.

**ATTACHMENTS**

- A. June 9, 2015 preferred conceptual design spray park (Option B)
- B. June 9, 2015 preferred conceptual design playground (Option A)
- C. Updated spray park conceptual design
- D. Updated playground conceptual design



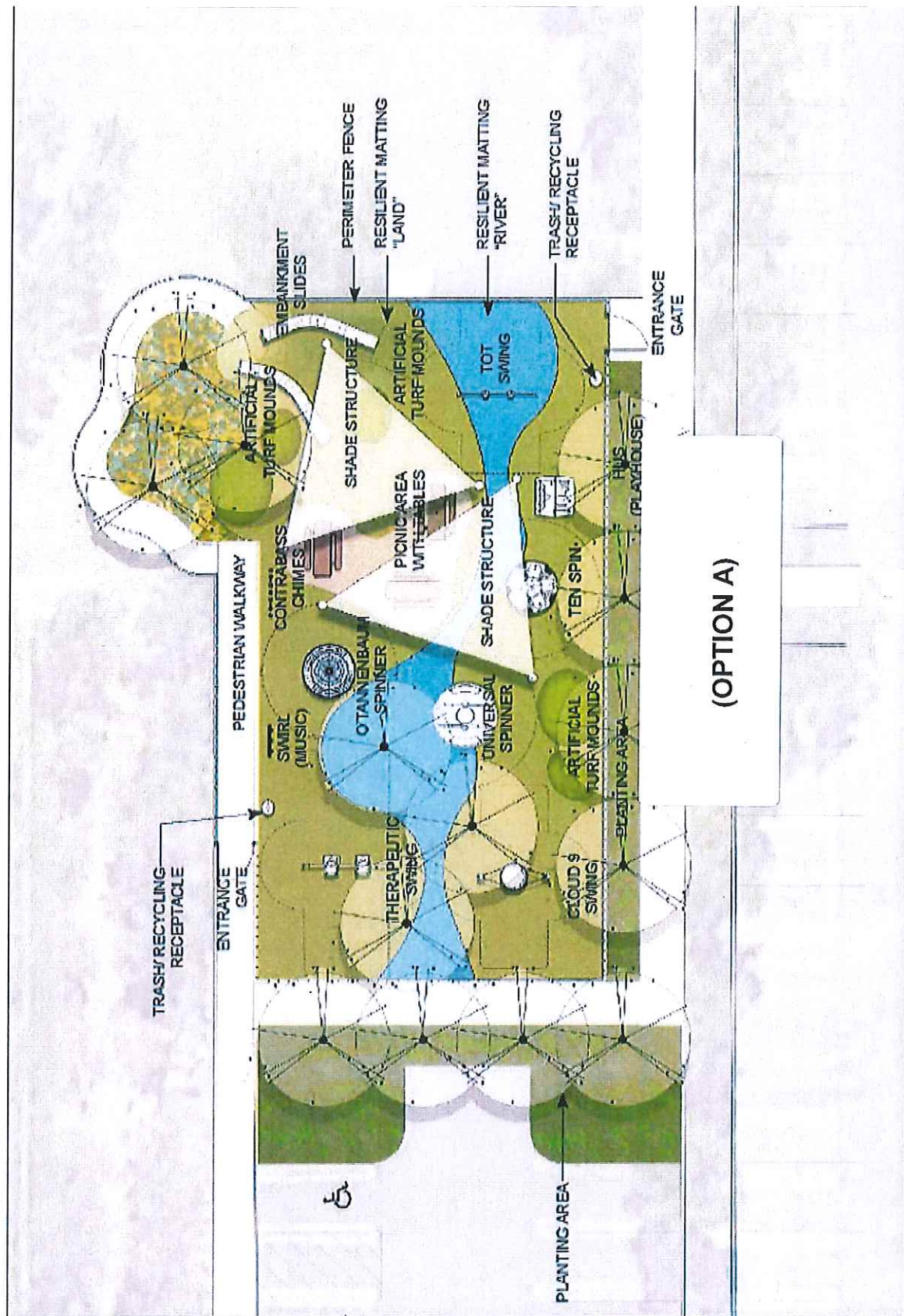
# ATTACHMENT "A"



Area	Feature	Notes
Area 1	Water Slide	Slide 1, Slide 2, Slide 3
Area 2	Water Slide	Slide 4, Slide 5, Slide 6
Area 3	Water Slide	Slide 7, Slide 8, Slide 9
Area 4	Water Slide	Slide 10, Slide 11, Slide 12
Area 5	Water Slide	Slide 13, Slide 14, Slide 15
Area 6	Water Slide	Slide 16, Slide 17, Slide 18
Area 7	Water Slide	Slide 19, Slide 20, Slide 21
Area 8	Water Slide	Slide 22, Slide 23, Slide 24
Area 9	Water Slide	Slide 25, Slide 26, Slide 27
Area 10	Water Slide	Slide 28, Slide 29, Slide 30
Area 11	Water Slide	Slide 31, Slide 32, Slide 33
Area 12	Water Slide	Slide 34, Slide 35, Slide 36
Area 13	Water Slide	Slide 37, Slide 38, Slide 39
Area 14	Water Slide	Slide 40, Slide 41, Slide 42
Area 15	Water Slide	Slide 43, Slide 44, Slide 45
Area 16	Water Slide	Slide 46, Slide 47, Slide 48
Area 17	Water Slide	Slide 49, Slide 50, Slide 51
Area 18	Water Slide	Slide 52, Slide 53, Slide 54
Area 19	Water Slide	Slide 55, Slide 56, Slide 57
Area 20	Water Slide	Slide 58, Slide 59, Slide 60
Area 21	Water Slide	Slide 61, Slide 62, Slide 63
Area 22	Water Slide	Slide 64, Slide 65, Slide 66
Area 23	Water Slide	Slide 67, Slide 68, Slide 69
Area 24	Water Slide	Slide 70, Slide 71, Slide 72
Area 25	Water Slide	Slide 73, Slide 74, Slide 75
Area 26	Water Slide	Slide 76, Slide 77, Slide 78
Area 27	Water Slide	Slide 79, Slide 80, Slide 81
Area 28	Water Slide	Slide 82, Slide 83, Slide 84
Area 29	Water Slide	Slide 85, Slide 86, Slide 87
Area 30	Water Slide	Slide 88, Slide 89, Slide 90
Area 31	Water Slide	Slide 91, Slide 92, Slide 93
Area 32	Water Slide	Slide 94, Slide 95, Slide 96
Area 33	Water Slide	Slide 97, Slide 98, Slide 99
Area 34	Water Slide	Slide 100, Slide 101, Slide 102
Area 35	Water Slide	Slide 103, Slide 104, Slide 105
Area 36	Water Slide	Slide 106, Slide 107, Slide 108
Area 37	Water Slide	Slide 109, Slide 110, Slide 111
Area 38	Water Slide	Slide 112, Slide 113, Slide 114
Area 39	Water Slide	Slide 115, Slide 116, Slide 117
Area 40	Water Slide	Slide 118, Slide 119, Slide 120
Area 41	Water Slide	Slide 121, Slide 122, Slide 123
Area 42	Water Slide	Slide 124, Slide 125, Slide 126
Area 43	Water Slide	Slide 127, Slide 128, Slide 129
Area 44	Water Slide	Slide 130, Slide 131, Slide 132
Area 45	Water Slide	Slide 133, Slide 134, Slide 135
Area 46	Water Slide	Slide 136, Slide 137, Slide 138
Area 47	Water Slide	Slide 139, Slide 140, Slide 141
Area 48	Water Slide	Slide 142, Slide 143, Slide 144
Area 49	Water Slide	Slide 145, Slide 146, Slide 147
Area 50	Water Slide	Slide 148, Slide 149, Slide 150
Area 51	Water Slide	Slide 151, Slide 152, Slide 153
Area 52	Water Slide	Slide 154, Slide 155, Slide 156
Area 53	Water Slide	Slide 157, Slide 158, Slide 159
Area 54	Water Slide	Slide 160, Slide 161, Slide 162
Area 55	Water Slide	Slide 163, Slide 164, Slide 165
Area 56	Water Slide	Slide 166, Slide 167, Slide 168
Area 57	Water Slide	Slide 169, Slide 170, Slide 171
Area 58	Water Slide	Slide 172, Slide 173, Slide 174
Area 59	Water Slide	Slide 175, Slide 176, Slide 177
Area 60	Water Slide	Slide 178, Slide 179, Slide 180
Area 61	Water Slide	Slide 181, Slide 182, Slide 183
Area 62	Water Slide	Slide 184, Slide 185, Slide 186
Area 63	Water Slide	Slide 187, Slide 188, Slide 189
Area 64	Water Slide	Slide 190, Slide 191, Slide 192
Area 65	Water Slide	Slide 193, Slide 194, Slide 195
Area 66	Water Slide	Slide 196, Slide 197, Slide 198
Area 67	Water Slide	Slide 199, Slide 200, Slide 201
Area 68	Water Slide	Slide 202, Slide 203, Slide 204
Area 69	Water Slide	Slide 205, Slide 206, Slide 207
Area 70	Water Slide	Slide 208, Slide 209, Slide 210
Area 71	Water Slide	Slide 211, Slide 212, Slide 213
Area 72	Water Slide	Slide 214, Slide 215, Slide 216
Area 73	Water Slide	Slide 217, Slide 218, Slide 219
Area 74	Water Slide	Slide 220, Slide 221, Slide 222
Area 75	Water Slide	Slide 223, Slide 224, Slide 225
Area 76	Water Slide	Slide 226, Slide 227, Slide 228
Area 77	Water Slide	Slide 229, Slide 230, Slide 231
Area 78	Water Slide	Slide 232, Slide 233, Slide 234
Area 79	Water Slide	Slide 235, Slide 236, Slide 237
Area 80	Water Slide	Slide 238, Slide 239, Slide 240
Area 81	Water Slide	Slide 241, Slide 242, Slide 243
Area 82	Water Slide	Slide 244, Slide 245, Slide 246
Area 83	Water Slide	Slide 247, Slide 248, Slide 249
Area 84	Water Slide	Slide 250, Slide 251, Slide 252
Area 85	Water Slide	Slide 253, Slide 254, Slide 255
Area 86	Water Slide	Slide 256, Slide 257, Slide 258
Area 87	Water Slide	Slide 259, Slide 260, Slide 261
Area 88	Water Slide	Slide 262, Slide 263, Slide 264
Area 89	Water Slide	Slide 265, Slide 266, Slide 267
Area 90	Water Slide	Slide 268, Slide 269, Slide 270
Area 91	Water Slide	Slide 271, Slide 272, Slide 273
Area 92	Water Slide	Slide 274, Slide 275, Slide 276
Area 93	Water Slide	Slide 277, Slide 278, Slide 279
Area 94	Water Slide	Slide 280, Slide 281, Slide 282
Area 95	Water Slide	Slide 283, Slide 284, Slide 285
Area 96	Water Slide	Slide 286, Slide 287, Slide 288
Area 97	Water Slide	Slide 289, Slide 290, Slide 291
Area 98	Water Slide	Slide 292, Slide 293, Slide 294
Area 99	Water Slide	Slide 295, Slide 296, Slide 297
Area 100	Water Slide	Slide 298, Slide 299, Slide 300

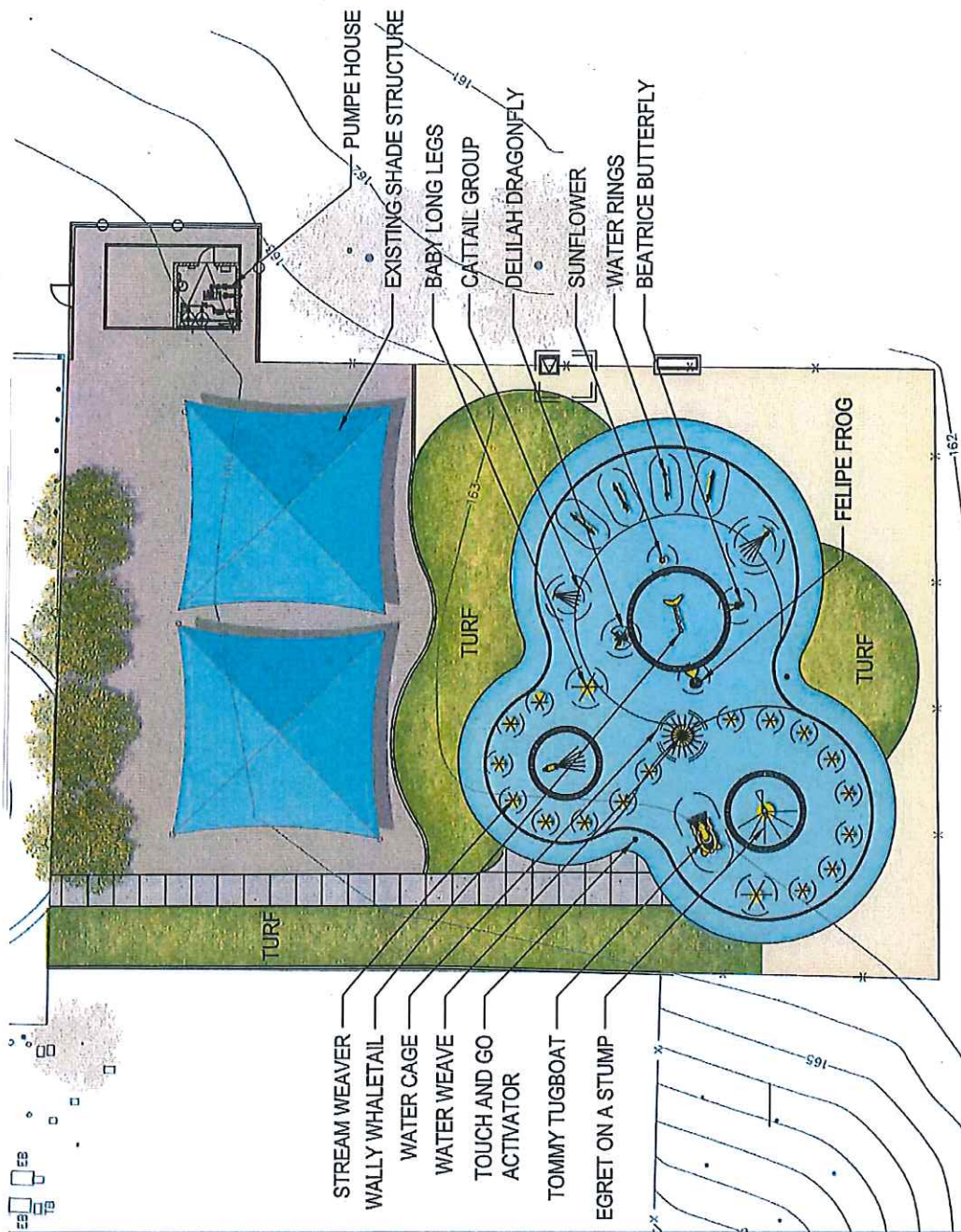


# ATTACHMENT "B"





# ATTACHMENT "C"



ANTIOCH PREWETT PARK  
ANTIOCH, CA  
22 SEPTEMBER 2015

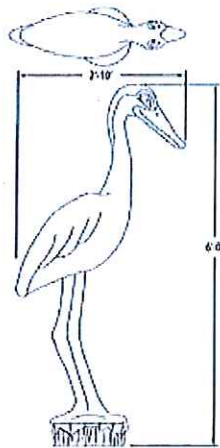
SPRAYGROUND

**rhaa**  
LANDSCAPE ARCHITECTURE • PLANNING



5





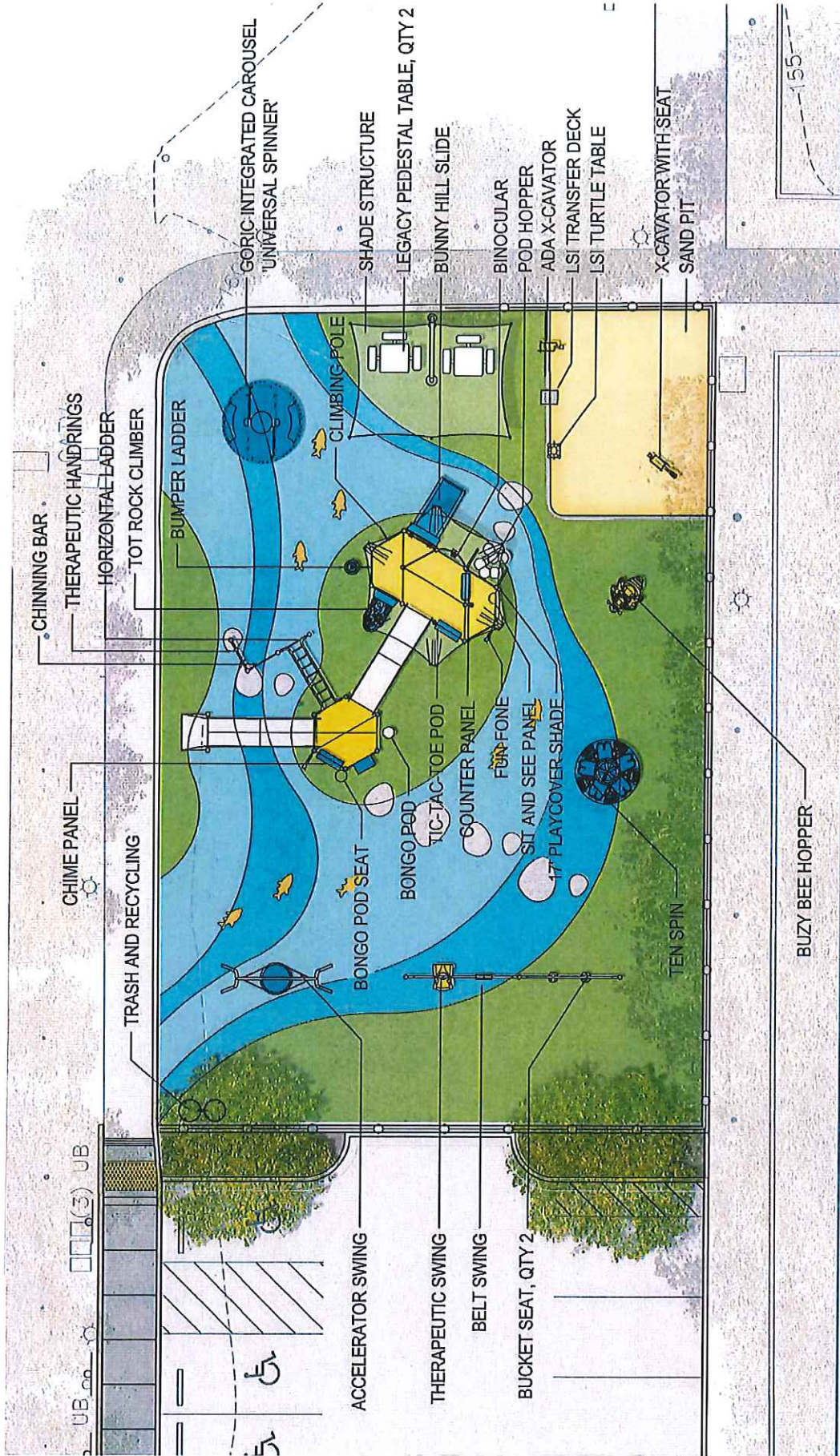
C2







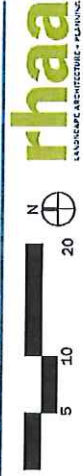
# ATTACHMENT "D"



ANTIOCH PREWETT PARK  
ANTIOCH, CA

22 SEPTEMBER 2015

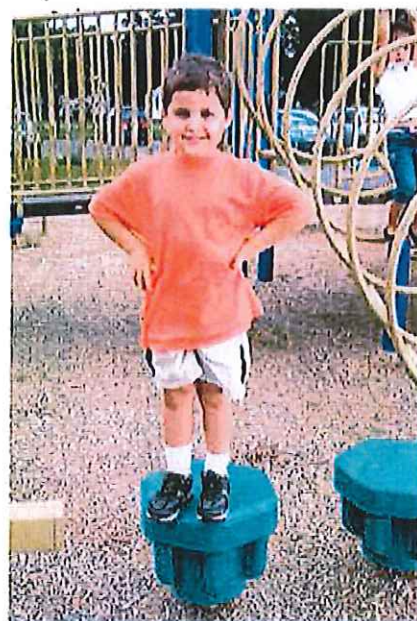
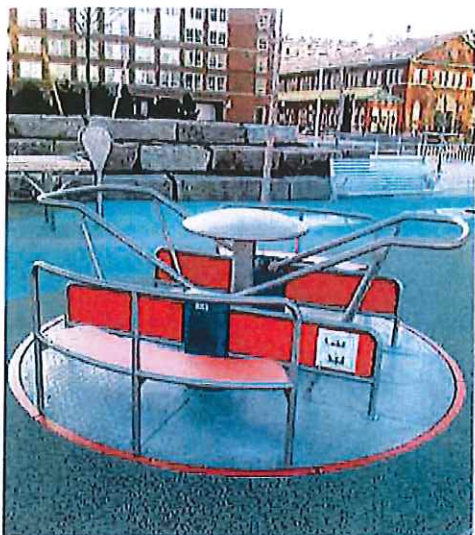
PLAYGROUND



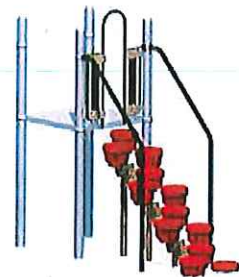
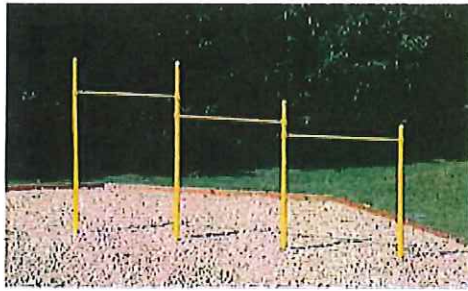
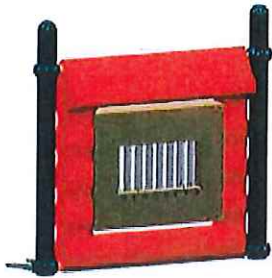
**rhaa**  
LANDSCAPE ARCHITECTURE • PLANNING

D1



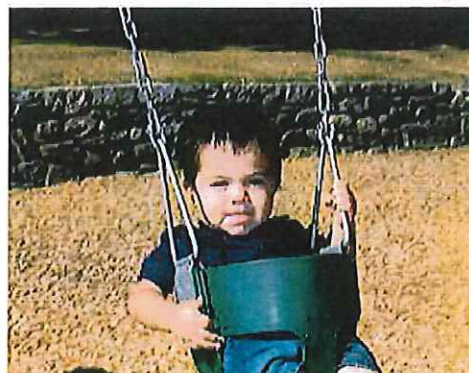
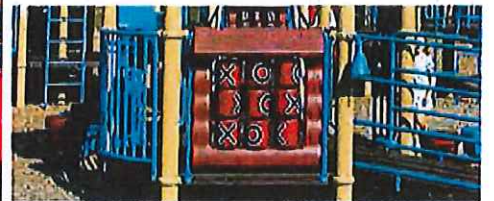
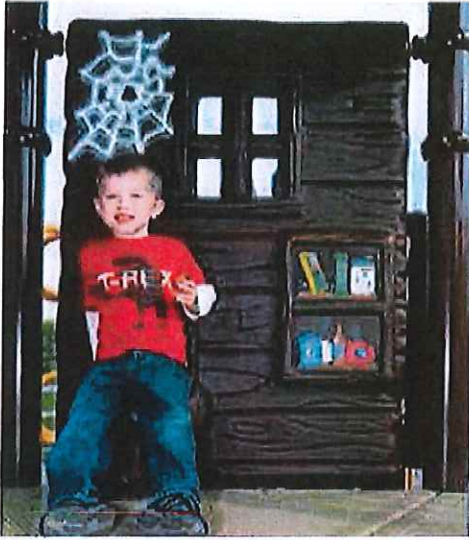






DB





D4



**STAFF REPORT TO THE  
PARKS AND RECREATION COMMISSION**

**DATE:** Regular Meeting of October 15, 2015

**TO:** Parks and Recreation Commission

**SUBMITTED BY:** Nancy Kaiser – Director of Parks and Recreation *Nancy Kaiser*

**SUBJECT:** Update on Contra Loma Estates Neighborhood Park Project  
Including Playground Replacement.

---

The Public Works Department will provide an oral report on the status of the playground replacement project at Contra Loma Estates Neighborhood Park located at Mahogany Drive and Manzanita Way.